

Model 350 I.S. and Model 355 I.S. Intrinsically Safe Indicators



350 I.S.



355 I.S.

SPECIFICATIONS

ELECTRICAL

- Power Requirement:** Input (J14): 5.1 VDC – 12 VDC
- Excitation Voltage:** 5 VDC
- Excitation Current:** 57 mA max (5V EXC)
(4) 350 Ohm weight sensors
- Signal Input Sensitivity:** 0.1 mV/V min – 10mV/V max
- Signal Connection:** 4 or 6 lead with sense leads

PERFORMANCE

- Full Scale (F.S.):** Selectable 0 to 999,990
- A/D Conversion :** 60 Hz
- Resolution:** 20 bit A/D converter, 100,000d displayed,
1,000,000 internal
- Zero Track Aperture:** Off – 10d
- Zero Range:** Selectable, 0.01-100% Full Scale
- Non-Linearity:** 0.005% Full Scale, Load Cell dependent
- Operating Temperature:** -10° C to +40° C
- Units of Measure:** lb, kg, grams, lb-oz, oz

KEYPAD

- Model 350 IS:** Durable elastomeric rubber, 5 key (Zero, Print, Units, Tare, Select)
- Model 355 IS:** Durable elastomeric rubber, 22 key (On/Target, Off, Zero, Tare, Print, Select, STOP, START, Select, Units, Sample/Enter, Clear and Full Numeric)

DISPLAY

- LED:** 6 digit weight display, 0.8" (22mm) height
12 LED annunciators for operational status
- LCD:** 6 digit weight display, 1" (25mm) height
12 LCD annunciators for operational status
Includes LCD checkweigh / sort bar
with or without backlight

COMMUNICATIONS

- Comm 1:** RS232 with Hardware Handshaking (CTS/RTS)
- Comm 2:** TTL Port for optional Fiber Optic Module

PROCESS CONTROL

- Remote Input:** 2 momentary contact programmable to perform TARE, PRINT, ZERO

Model 350 I.S. and Model 355 I.S. Intrinsically Safe Indicators

TECHNICAL SPECIFICATION

SPECIFICATIONS CONTINUED FROM PREVIOUS PAGE

ENCLOSURE

Stainless Steel: NEMA 4X, IP6X

Mounting: 2 Swivel brackets are available for battery or AC operation

Shipping Weight: 7 lb. (indicator only)

APPROVALS

- Factory Mutual
- ATEX
- OIML R76/1992-GB1-09.05
- EC UK2855
- NTEP COC 98-092
- Canadian WM AM 5257
- Canadian WM AM 5518
- CE



OPTIONS

SAFE AREA OPTIONS

Battery Charger: Charges completely discharged battery option in approximately 3.5 hours. Universal AC input 85-265 VAC, 50/60 Hz

HAZARDOUS AREA OPTIONS

Battery: Stainless steel enclosure, mounts to indicator swivel bracket. 200 hours continuous use with LCD display and one load cell. 100 hours continuous use with LED display and one load cell.

AC/DC Power Supply: Stainless steel enclosure. Powers up to 2 indicators (2 indicators can only be powered in Groups C-G hazardous area) Wall mount. Universal AC input 90-250VAC, 50/60 Hz.

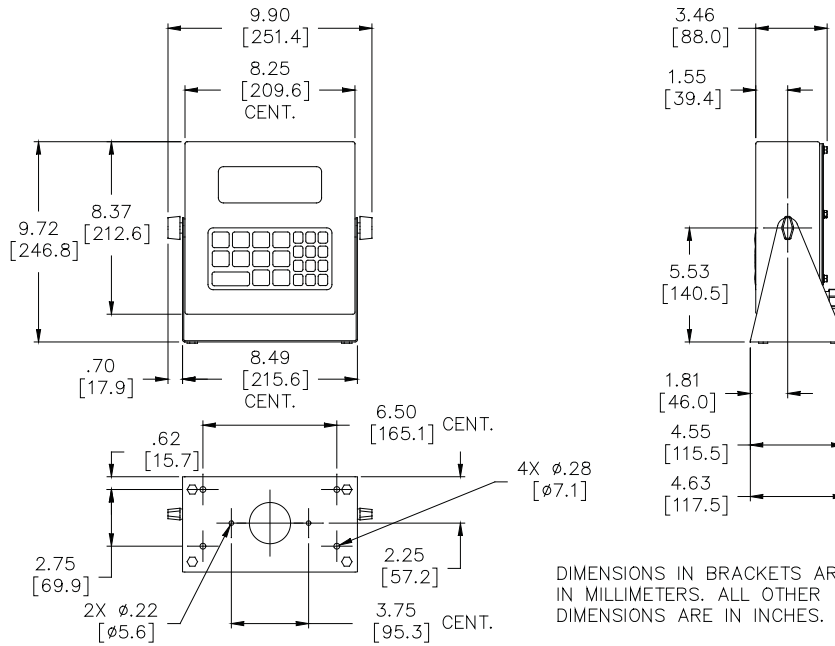
Power Extension Cable: Allows the AC/DC power supply to be mounted away from the indicator 25 feet or 50 feet lengths available.

Model 350 I.S. and Model 355 I.S. Intrinsically Safe Indicators

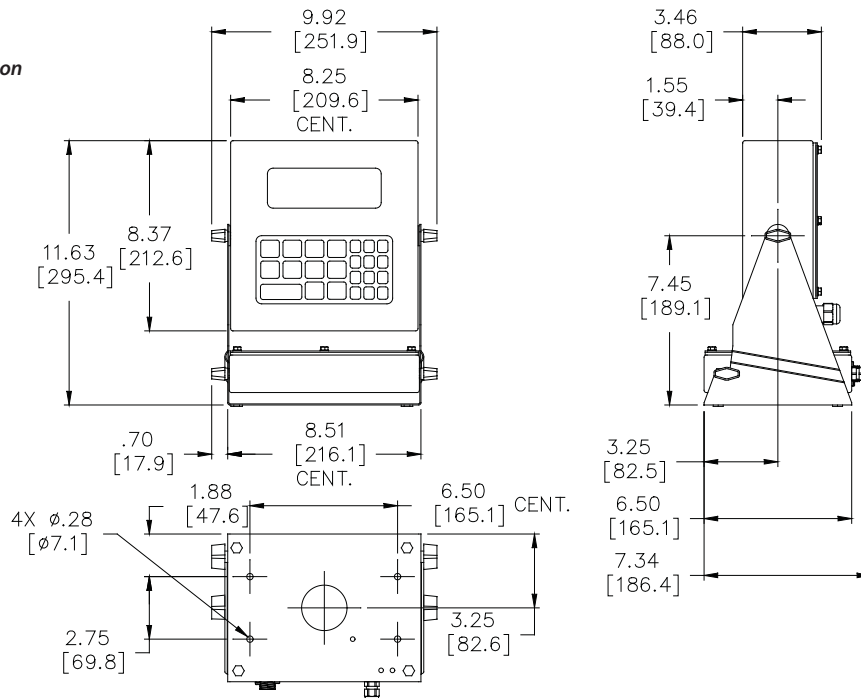
TECHNICAL SPECIFICATION

DIMENSIONS CONTINUED FROM PREVIOUS PAGE

355 I.S.



**355 I.S.
with battery option**



Avery Weigh-Tronix

www.averyweigh-tronix.com

Avery Weigh-Tronix is an ITW company



Avery Weigh-Tronix is a trademark of the Illinois Tool Works group of companies whose ultimate parent company is Illinois Tool Works Inc (Illinois Tool Works). Copyright © 2014 Illinois Tool Works. All rights reserved.

This publication is issued to provide outline information only and may not be regarded as a representation relating to the products or services concerned. This publication was correct at the time of going to print, however Avery Weigh-Tronix reserves the right to alter without notice the specification, design, price or conditions of supply of any product or service at any time.

3/2014 350IS_spec_500348.indd
AWT35-500374